

SMART WASTE BIN

AUTOMATED SOLID WASTE DISPOSAL CONTROL SYSTEM

Automated control system for solid waste removal. The solution allows to track the filling of garbage cans and monitor the visits of garbage trucks to container sites.



No overfilled trash bins



Contractor monitoring



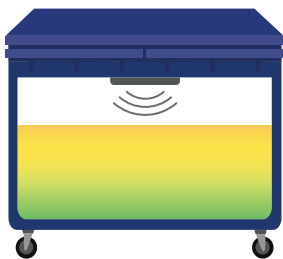
Contractor monitoring

MAIN FUNCTIONS

- ▶ Percentage monitoring of waste bins
- ▶ Monitoring compliance with the garbage collection schedule
- ▶ Display of garbage cans on a map
- ▶ Generating reports according to the statistics of the filling of tanks and garbage collection
- ▶ Emergency Dispatcher Notification

SYSTEM ADVANTAGES

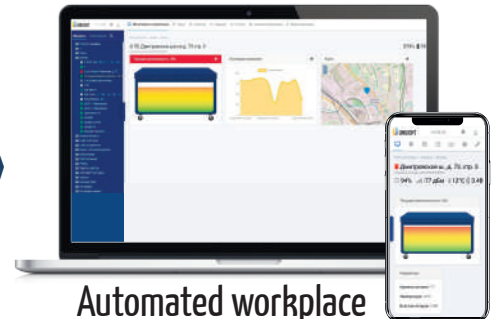
- ▶ Easy installation
- ▶ Functional software designed for centralized data collection
- ▶ Work with any types of garbage cans
- ▶ Flexible system structure
- ▶ Ability to connect a fire alarm sensor



Trash can with sensor



UNILIGHT Software



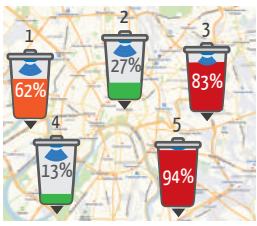
Automated workplace of the dispatcher



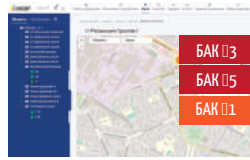
115280, Moscow, Leninskaya Sloboda Street, 19/6
+7 (495) 139-62-77; office@unilight.ru
www.unilight.ru



STAGES OF SOLUTION



The map shows the level of full trash bins



When filling the trash above a given level, the dispatcher receives a notification



In accordance with the list of filled trash bins, a schedule for garbage collection is made



The dispatcher receives a notification of garbage collection and sees on the graph a change in the level of filling the trash

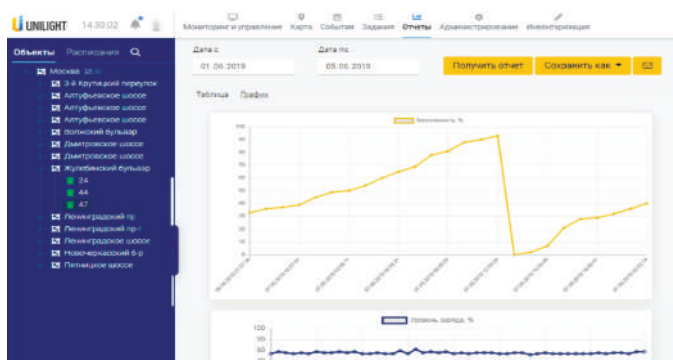
WASTE CONTAINER FILL SENSOR



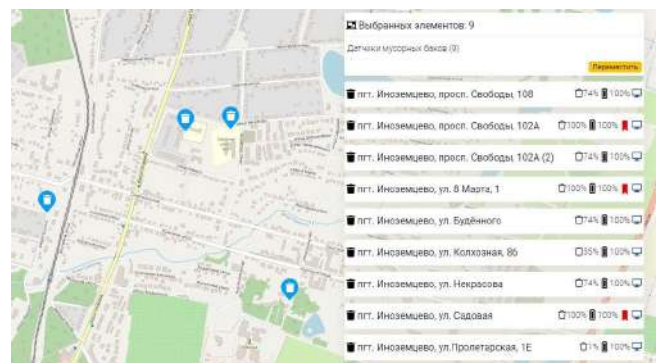
SPECIFICATIONS:

- ▶ Support for communication channels: GSM (3G), NB-IoT, LoRa
- ▶ Integrated GPS module
- ▶ High accuracy in determining tank level

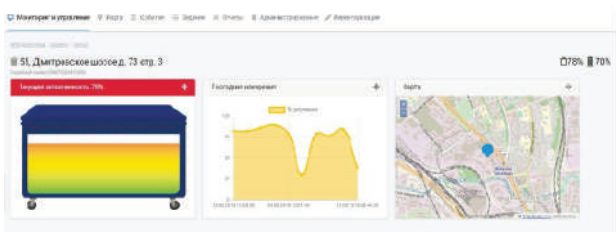
SOFTWARE



Graph of tank filling. Depth of storage is not limited. According to the accumulated data, reports are available in tabular and graphical form. Downloading data to Excel, PDF, CSV, JPG, PNG is available.



Map with the display of garbage bins and the level of their fullness. The system allows monitoring the operation of garbage trucks and sends notifications if the occupancy level reaches a certain level.



Intuitive dispatcher interface. Displays the level of filling of containers, in individual and group representation, in the form of text and mnemonic diagrams.