

SMART POLE UNILIGHT

Intellectual hardware-software system of smart devices that is able to monitor and manage traffic, unite received data and generate adaptive management algorithms for transport infrastructure all in one system.



Transport telematics and Analytics



Installation of a smart device complex on outdoor lighting poles



Eco and weather monitoring of the environment

WLAN

- Available in a 360° lighting module or in a dedicated module
- 2 versions: mesh network or wired network
- Assign a dedicated part to city operators and a restricted bandwidth for the general public

LIGHT RING

- Red, blue, green, neutral or warm white LEDs
- Permanent light or flashing light to attract attention
- Can be automated or controlled from a distance

LUMINAIRE BRACKET

- Control, management and dimming
- Automatic geolocation
- Parking space monitoring

INFORMATION DISPLAY

- Air temperature, atmospheric pressure, road condition, date and time
- Output of any information, videos and advertisements
- Payment terminal, parking meter

LIGHTING SPOT

- Lumen package range: from 1,300 to 2,400lm*
- On-site inclination angle settings: -10/+40° > Neutral or warm white LEDs

VIDEO ANALYTICS CAMERA

- Monitoring and analytics of the key parameters of traffic flow

EV CHARGER

- Safety locking during charging
- Optional: communication, metering and access unit (for cabinet mounting)

LOUDSPEAKER

- Professional sound system
- 100V public address system
- Frequency range: 100 - 18,000Hz
- Perfect sound - 20W power output
- Weatherproof / adapted to indoor and outdoor applications

INTERCOM

- Vandal resistant SIP and IP intercom
- Crystal clear audio
- Background active noise cancellation
- Automatic volume adjustment
- Stainless steel front plate with one button

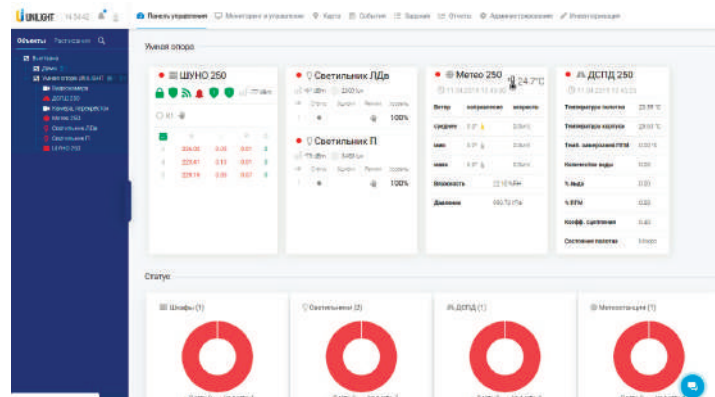


115280, Moscow, Leninskaya Sloboda Street, 19/6
+7 (495) 139-62-77; office@unilight.ru
www.unilight.ru



SOFTWARE

- ▶ Easy access to all elements of smart support
- ▶ from city map
- ▶ Equipment condition monitoring
- ▶ Multi-user access
- ▶ Maintaining an event archive
- ▶ Formation of reporting documents



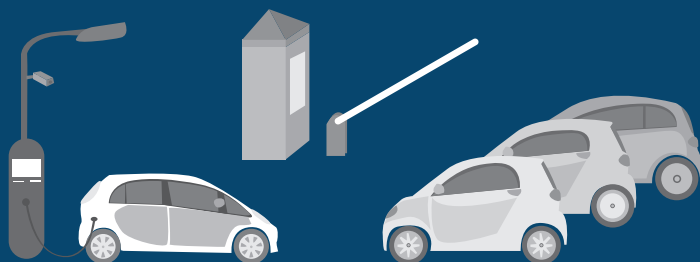
ROADS

- ▶ Traffic control
- ▶ Road Condition Monitoring
- ▶ Collection of meteorological data
- ▶ Emergency call



PARKINGS

- ▶ Parking Control
- ▶ Charging for electric vehicles
- ▶ Cleanliness monitoring and cleaning service alerts
- ▶ Payment terminal



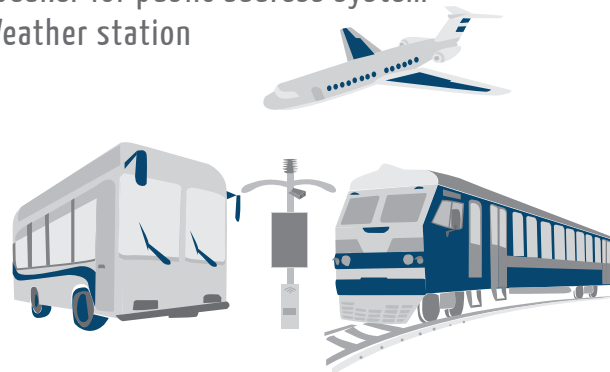
PARKS

- ▶ Intelligent lighting
- ▶ Public WiFi
- ▶ Charging for scooters and mobile devices
- ▶ Speaker for public address system and music
- ▶ Emergency call
- ▶ Gas analyzer



TRANSPORT NODES

- ▶ Public wifi
- ▶ Passenger traffic analytics
- ▶ Information table
- ▶ Mobile Charging
- ▶ Speaker for public address system
- ▶ Weather station



115280, Moscow, Leninskaya Sloboda Street, 19/6
+7 (495) 139-62-77; office@unilight.ru
www.unilight.ru

